



# Local Data Dashboard

*User guide*



# Introduction

We have developed an interactive dashboard for Local Pharmaceutical Committees (LPCs). The dashboard provides analysis of the Dispensing Contractors Data series, published by the NHS Business Services' Authority.

The dashboard provides an overview of activity at both LPC and individual pharmacy level. It also allows for benchmarking against other LPCs across the country. The information contained in the Dashboard will enable LPCs to provide bespoke support to pharmacies to maximise NHS revenues.

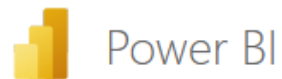
The Dashboard can also be used as a source of evidence to help to support conversations and funding bids with local commissioners.



# Access and sign-in

The Local Data Dashboard can be found at the CCA website [here](#).

When you scroll down, you will be invited to sign in with your Microsoft ID. When you click 'sign in', a pop-up window will appear, where you can enter your credentials.



Sign in to view this report

Sign in

# Page 0 - Contents

## Local Data Dashboard



### January 2026 summary:

Number of pharmacies:

10,333

Total items dispensed:

101.2M

Total claims for national services:

2.1M

0 - Contents	1 - LPC summary	2 - Pharmacy benchmarking	3 - Compare pharmacies	4.0 - Average volumes by LPC	4.1 - LPC benchmarking	5 - LPC and National Pharmacy Benchmarking	6 - Intra-company benchmarking	7 - Pharmacy First fixed payments	8 - Bundling by LPC	9 - Bundling by pharmacy	10 - Lookup information about a pharmacy
--------------	-----------------	---------------------------	------------------------	------------------------------	------------------------	--	--------------------------------	-----------------------------------	---------------------	--------------------------	--

All data is publicly available from the NHS Business Services' Authority, as part of their Dispensing Contractors Data series. Current data runs until January 2026.

The contents page provides an overview of the sector in the most recent month for which data is available.

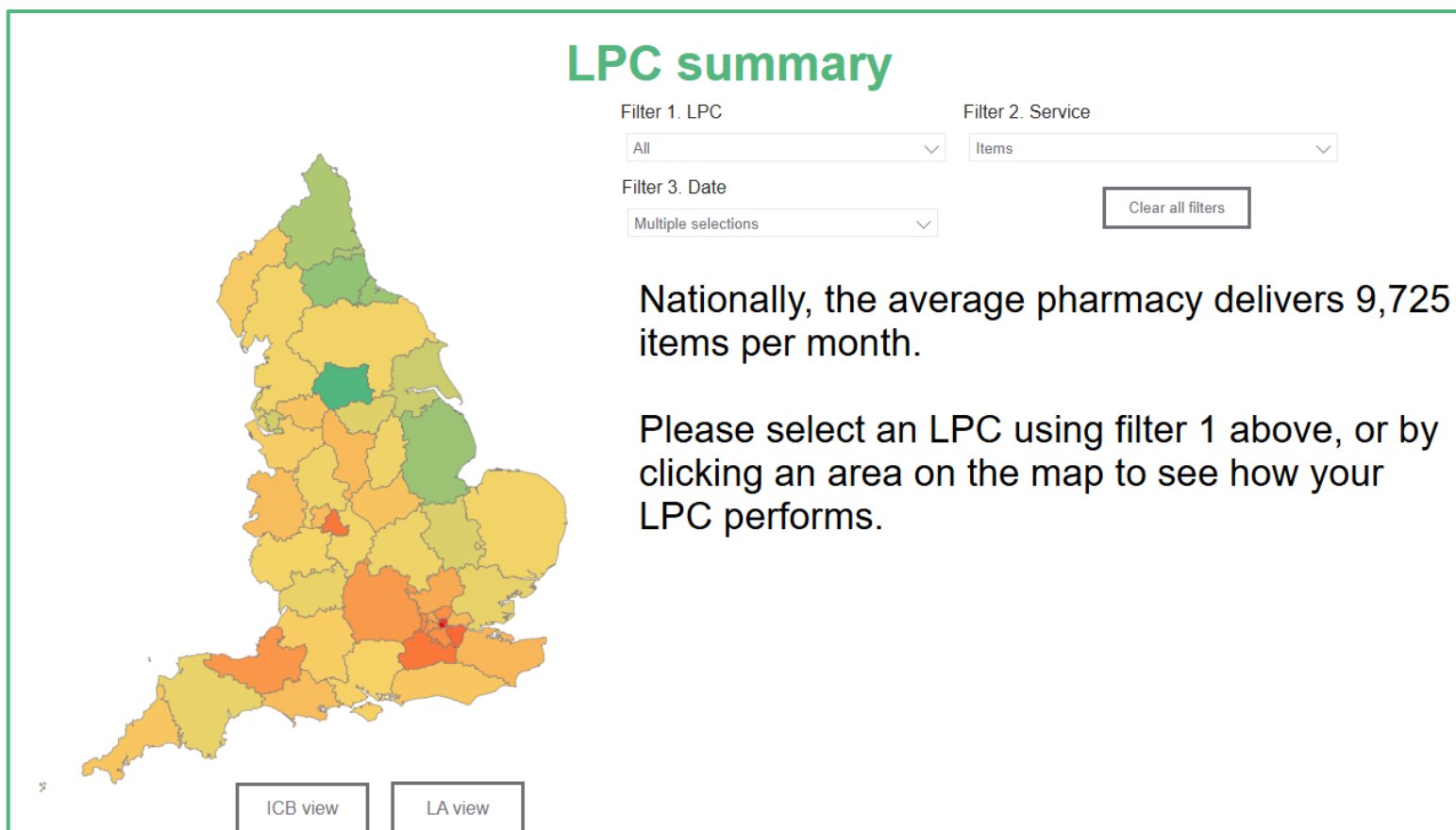
The first value shows the number of active pharmacies. Pharmacies are deemed to be active if they claimed for one or more services.

The third value shows the number of claims for national clinical services.

Below the summary, there are shortcut buttons to take you to other pages within the dashboard.

The contents can also be accessed using the menu on the bottom of the dashboard.

# Page 1 – LPC summary



The map on this page shows data for every LPC in England.

Users can select an LPC using either filter 1, or by clicking on the map to see further insights.

Services can be selected using filter 2, items is the default.

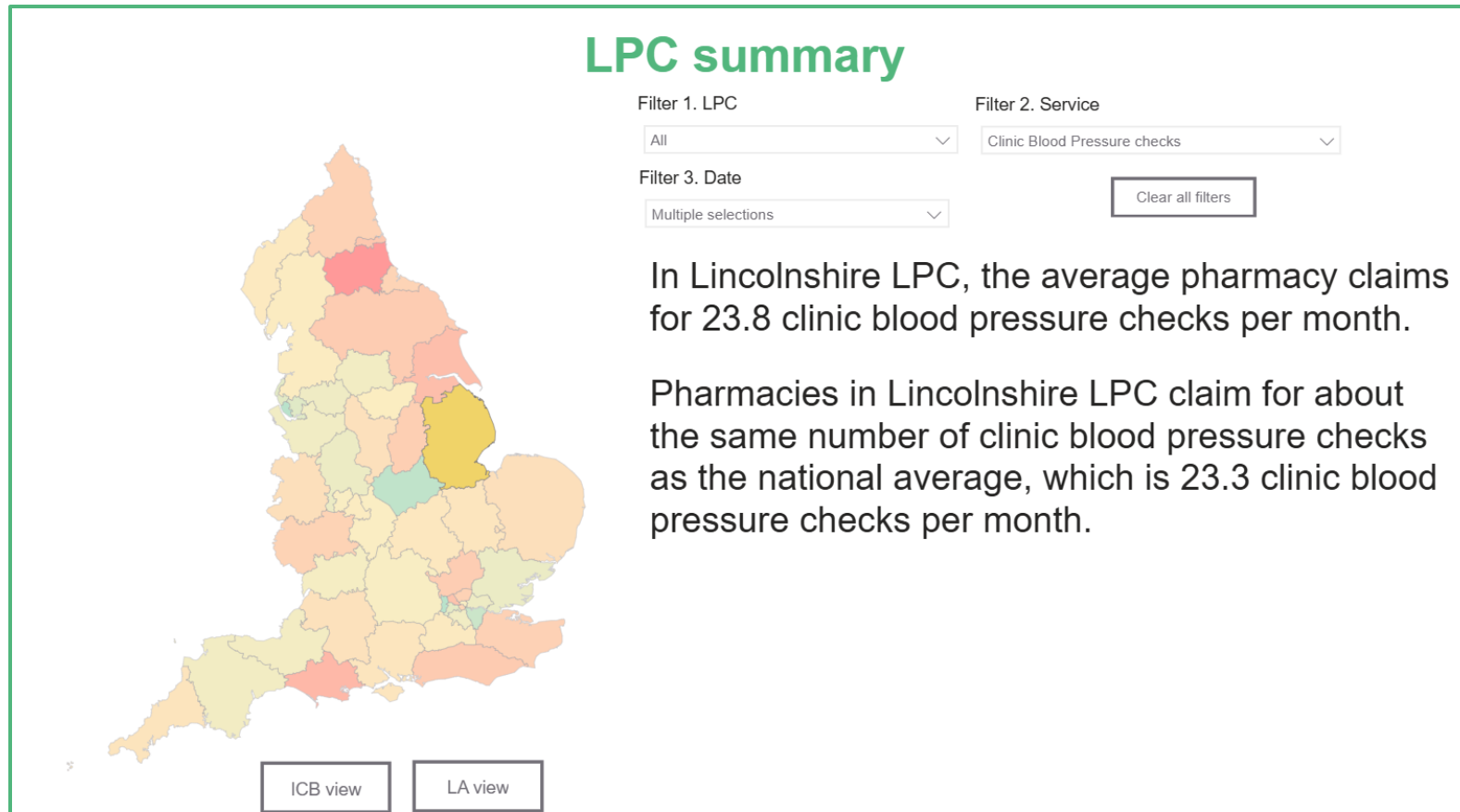
Dates can be selected using filter 3, the default is the most recent 3 months for which data is available.

For each service, LPCs in green have a higher number of claims for the selected service, per pharmacy, than those in red.

The legend on the top left of the graph shows the scale from the LPC with the lowest average claims per pharmacy to the highest average claims per pharmacy.

To the right of the graph there is text which displays the average number of claims per pharmacy nationally, and instructions to see further insights on your LPC.

# Page 1 – LPC summary (continued)



When an LPC is selected using either the map or filter 1, the text box will display further insights.

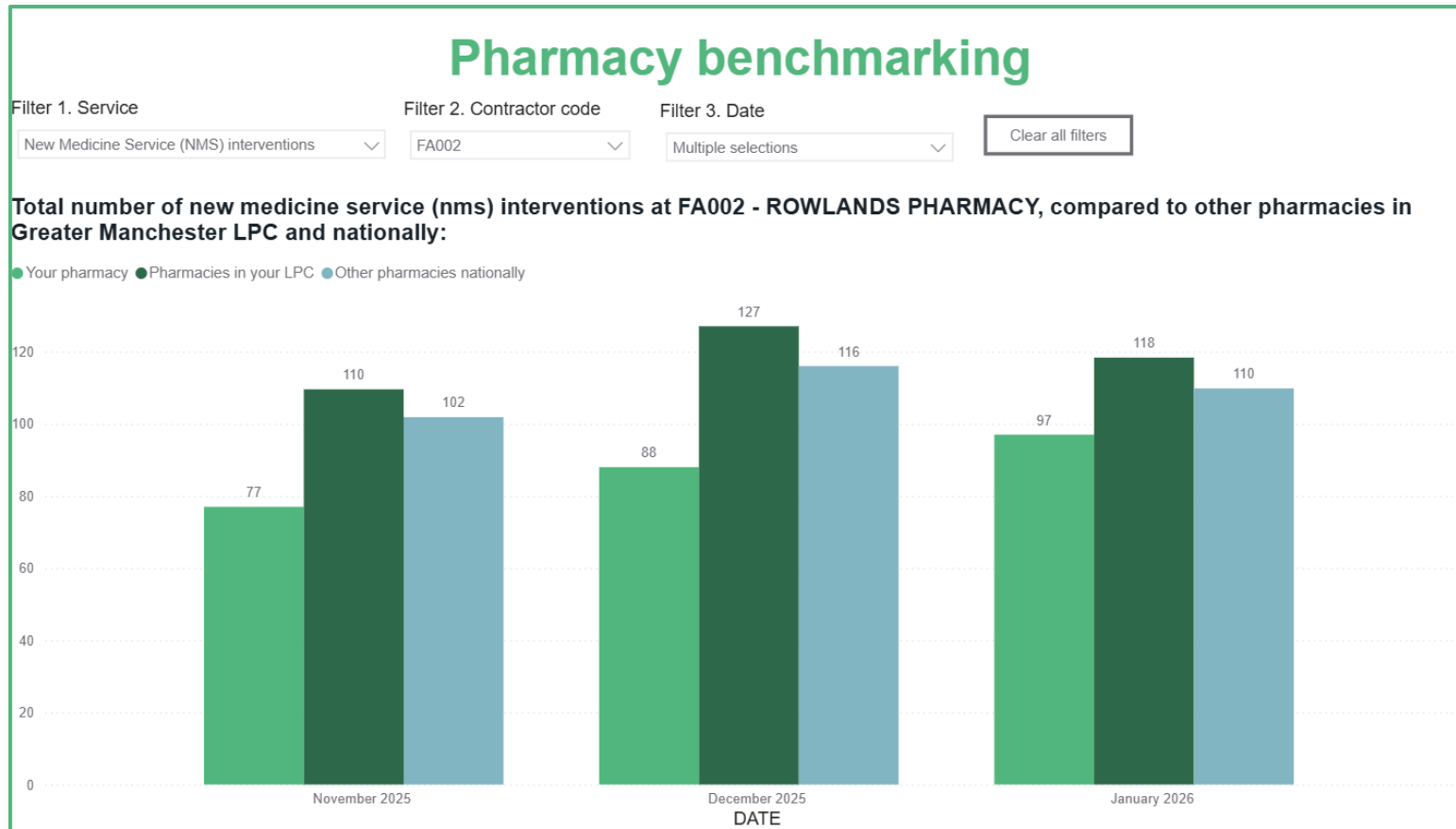
In the screenshot on the left, Lincolnshire LPC has been selected by clicking on it on the map.

“Clinic Blood Pressure checks” has been selected from filter 2. Filter 3 has been left at the default.

When an area and service are selected the dashboard will show:

- The average monthly number of claims for pharmacies in that LPC.
- Whether this is above, below, or similar to the national average.
- The average number of claims for pharmacies nationally.

# Page 2 – Pharmacy Benchmarking



This page shows claims data by month for a service (defined using filter 1). The default service is items.

An individual pharmacy can be benchmarked by selecting the contractor code (F-code) using filter 2.

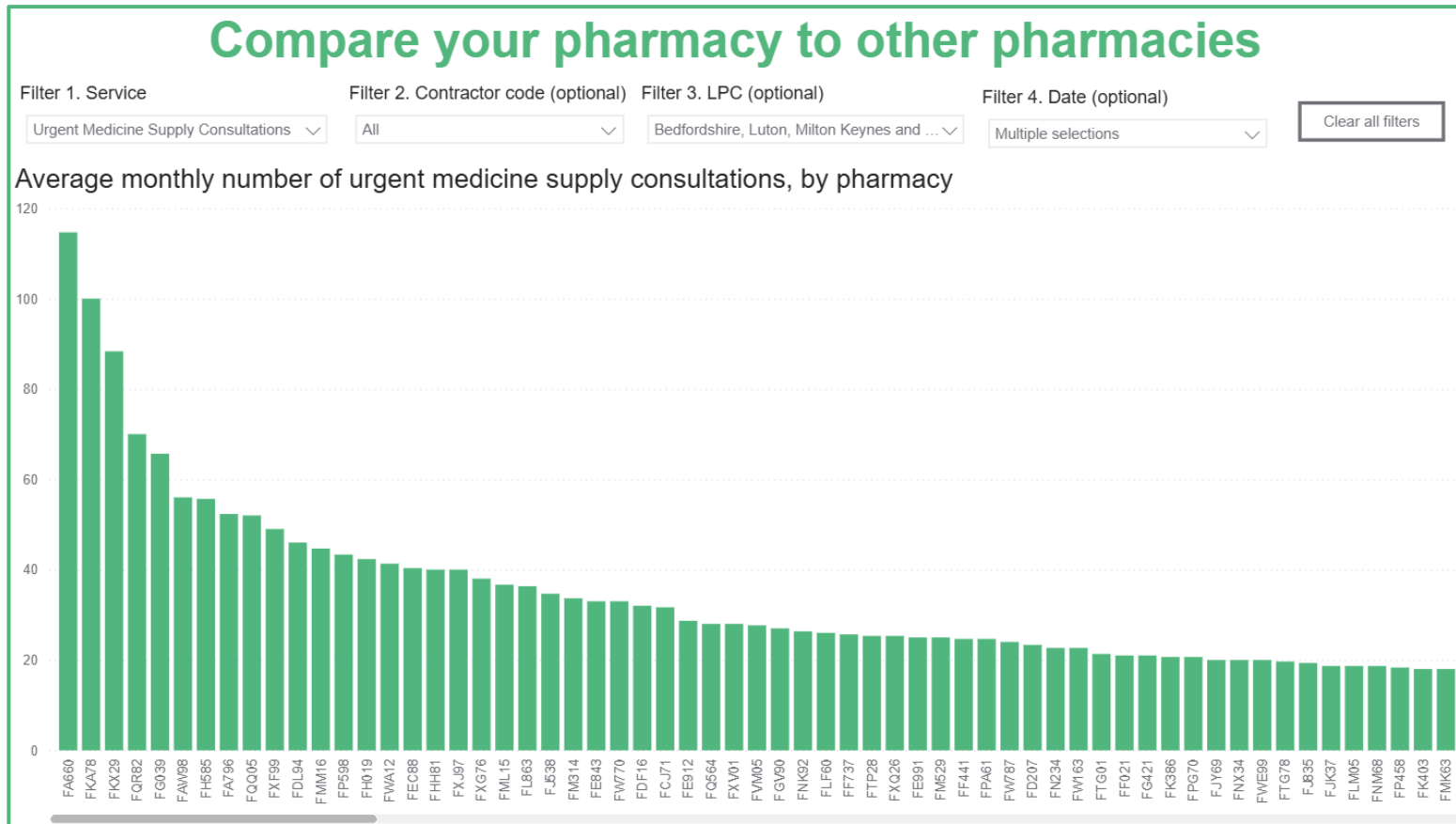
Once a contractor code has been selected, it will display the data for the most recent 3 months by default. Other months can be selected using filter 3.

The dashboard will show 3 columns for each month selected. The first shows the number of claims for the service and pharmacy specified using the filters.

In the example on the left, the dashboard shows:

- FA002 claimed for fewer NMS interventions than the average pharmacy in Greater Manchester LPC for November 2025, December 2025 and January 2025. The same is true comparing FA002 to all pharmacies nationally.
- A typical pharmacy in Greater Manchester LPC claims for more NMS interventions than the typical pharmacy nationally.

# Page 3 – Compare pharmacies



This page allows users to see average monthly claims volumes for all individual pharmacies nationally, and across their LPC.

- This can be done by:
- Selecting a service using Filter 1.
  - Selecting a pharmacy, an LPC, or the dates for comparison using filters 2, 3 or 4.

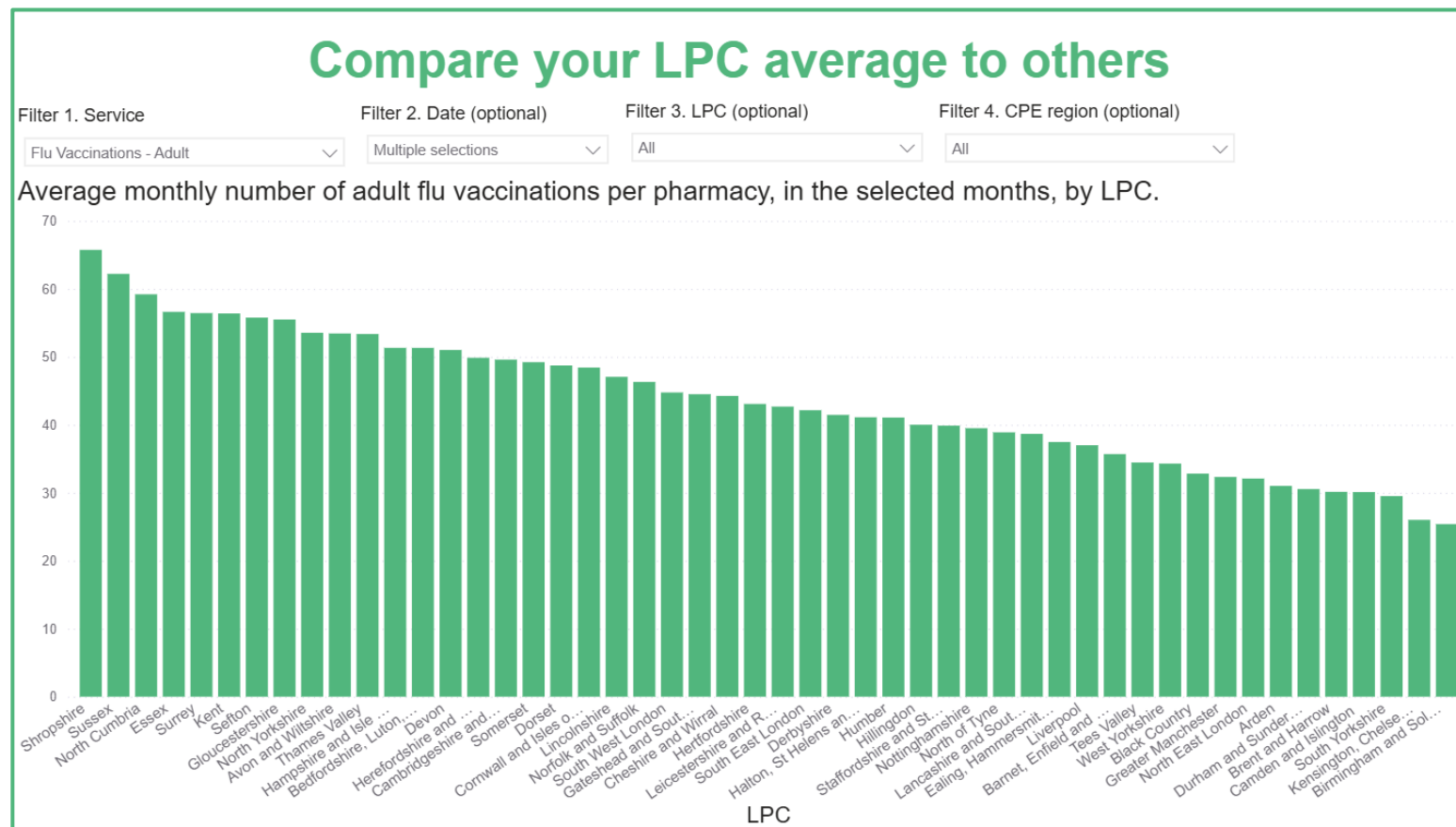
In this example, the service selected is urgent medicine supply consultations. The LPC selected is Bedfordshire, Luton, Milton Keynes and Northamptonshire LPC.

The graph on the right-hand side shows pharmacies ranked by their average monthly claims for urgent medicine supply.

Hovering over a bar will show additional information, such as the average number of claims and that pharmacies ranking among their LPC and nationally.

Users may highlight a specific pharmacy using Filter 2, and the bar for that specific pharmacy will turn red.

# Page 4 – Compare LPCs



This page enables benchmarking across LPCs.

Users may select one or more CPE England to compare LPCs or select one or more individual LPCs, using the menus on the left-hand side.

A service must be selected using filter 1.

The other filters remain optional.

Filter 2 allows users to select data for a specific month (or months). The default is the most recent month for which data is available.

Filter 3 allows for filtering by Community Pharmacy England region. To note, these are not aligned to the pharmacies NHS England region.

Filter 4 allows users to filter for specific LPCs. This allows users to compare a number of LPCs in different regions, or only specific LPCs within a region.

# Page 4.1 – Compare LPCs

## Compare your LPC average to others

Filter 1. LPC:  Filter 2. Date (optional):

Service	LPC average claims	National average claims
<input type="checkbox"/> Contraception Service	18.8	14.6
<input checked="" type="checkbox"/> Emergency consultations	10.3	5.5
<input checked="" type="checkbox"/> Initiation consultations	1.1	1.1
<input checked="" type="checkbox"/> Ongoing Consultations	7.3	7.9
<input checked="" type="checkbox"/> Discharge Medicine Service	1.6	2.1
<input checked="" type="checkbox"/> Hypertension case-finding service	27.2	26.3
<input checked="" type="checkbox"/> Items	6,013.6	9,725.3
<input checked="" type="checkbox"/> New Medicine Service	61.0	101.0
<input type="checkbox"/> Pharmacy First	50.1	55.3
<input checked="" type="checkbox"/> Clinical Pathways Consultations	25.5	30.3
<input checked="" type="checkbox"/> Minor Illness Referral/CPCS	6.7	11.7
<input checked="" type="checkbox"/> Urgent Medicine Supply	17.9	13.4
<input checked="" type="checkbox"/> Smoking Cessation consultations	0.0	0.1
<input checked="" type="checkbox"/> Vaccinations	41.9	58.5
<b>Total</b>	<b>6,214.2</b>	<b>9,983.2</b>

This page enables benchmarking across LPCs.

Users may select an LPC using filter 1. Filter 2 allows users to select data for a specific month (or months). The default is the most recent 3 months for which data is available.

The table displays different pharmacy services. This can be drilled-down to sub-services where they exist.

The second column of the table will display the average number of claims for each service.

If the value in this column is 10% higher than the national average, the value will turn green.

If it is more than 10% lower than the national average, it will turn red.

If it is within 10% of the national average, it will remain black.

# Page 4.1 – LPC pharmacy benchmarking

## Compare your pharmacies average to others

Filter 1. Contractor code

Filter 2. Date (optional)

Filter 3. LPC (optional)

FA380

Multiple selections

All

Clear all filters

### FA380 - DAY LEWIS PHARMACY compared to other pharmacies in Essex LPC and nationally

Service	Pharmacy	Pharmacies in the same LPC	All pharmacies nationally
⊕ Contraception Service	63.3	13.8	14.57
⊕ Discharge Medicine Service	0.0	1.6	2.09
⊖ Hypertension case-finding service	40.3	28.6	26.34
⊕ Ambulatory Blood Pressure Monitoring	3.0	2.2	2.99
⊕ Clinic Blood Pressure checks	37.3	26.3	23.35
⊕ Items	7,491.0	10,143.1	9,725.33
⊕ New Medicine Service	130.3	107.9	101.04
⊕ Pharmacy First	57.3	66.1	55.33
⊕ Smoking Cessation consultations	0.0	0.0	0.08
⊕ Vaccinations	39.7	82.7	58.46
<b>Total</b>	<b>7,822.0</b>	<b>10,443.9</b>	<b>9,983.22</b>

This page benchmarks individual pharmacies against other pharmacies nationally, and within their LPC.

Filter 1 allows the user to select a pharmacy using their contractor code.

Filter 2 allows the user to select a month (or months) to see data for.

In the table, the values within the “Pharmacy” column show the average number of monthly claims for that pharmacy.

The values within the “Pharmacies in the same LPC” shows the average number of monthly claims for pharmacies within the same LPC.

The values within the “All pharmacies nationally” shows the average number of monthly claims for pharmacies within the same LPC.

If the values in either column turn green, that means the average at LPC or national level is at least 10% greater than the selected pharmacy. If they turn red, it means the average is at least 10% less than selected pharmacy. If they remain black, it means the pharmacy is within 10% of the average.

In the example on the left-hand side, Filter 1 is set to FA380. Looking at the ambulatory blood pressure monitoring row, the value in the “Pharmacies in the same LPC” column is red, whilst the value in the “all pharmacies nationally” column is black.

This means that the average pharmacy in Essex LPC does less ABPM than FA380, whilst the average pharmacy nationally does about the same.

# Page 6 – intracompany benchmarking

## Compare your pharmacies average to others

Filter 1. Contractor Code: FA227  
 Filter 2. Owner (optional): BOOTS UK LIMITED  
 Filter 3. LPC (optional): All  
 Filter 4. Date (optional): Multiple selections  
 Clear all filters

FA227 compared to other BOOTS UK LIMITED pharmacies in Herefordshire and Worcestershire LPC and nationally

Service	FA227	Other BOOTS UK LIMITED pharmacies in Herefordshire and Worcestershire	Other BOOTS UK LIMITED pharmacies nationally
⊕ Items	6,404.3	7,407.8	8,674.8
⊕ Pharmacy First	98.0	62.4	64.2
⊕ New Medicine Service	28.7	41.2	65.0
⊖ Contraception Service	26.0	29.8	30.0
⊕ Emergency consultations	19.0	16.6	16.0
⊕ Ongoing Consultations	5.3	10.5	11.5
⊕ Initiation consultations	1.7	2.7	2.5
⊕ Hypertension case-finding service	13.3	20.0	32.3
⊕ Vaccinations	6.0	11.9	15.9
⊕ Discharge Medicine Service	0.0	0.3	1.3
⊕ Serious Shortage Protocol Fees	0.0	0.4	0.4
⊕ Smoking Cessation consultations	0.0	0.0	0.0
<b>Total</b>	<b>6,576.3</b>	<b>7,573.9</b>	<b>8,883.9</b>

This page enables the user to benchmark an individual pharmacy to other pharmacies with the same owner, both across their LPC and nationally.

A pharmacy must be selected using Filter 1. The list of pharmacy codes can be filtered down using filters 2 and 3. However, they do not need to be used.

In the example on the left-hand side, the user has selected:

- Contractor Code as FA227 using filter 1.
- Owner as Boots UK Limited using filter 2.

There are no month or LPC filters applied.

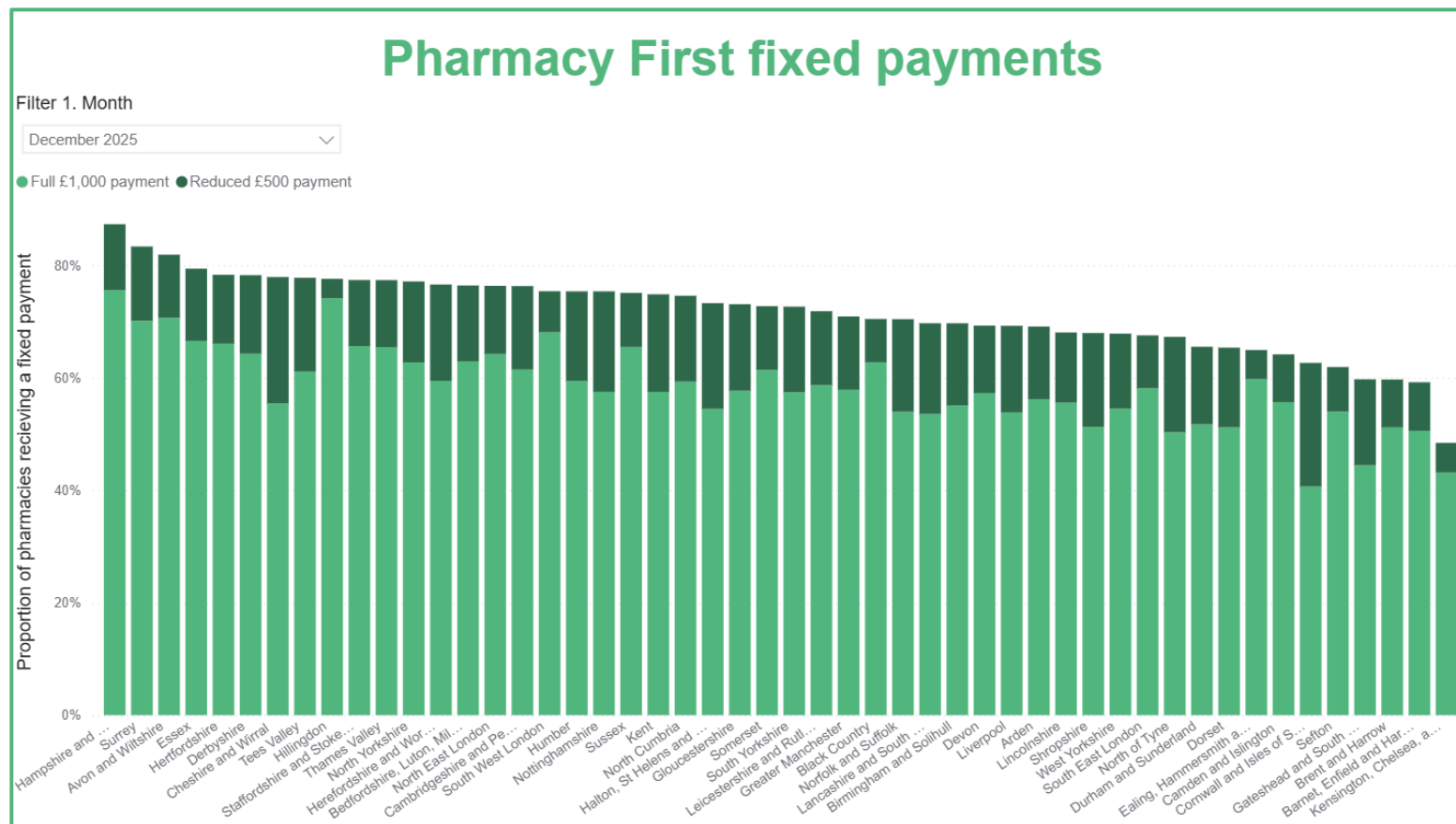
The column outlined in blue shows the average monthly claims for that contractor.

The column outlined in purple shows the average monthly claims for contractors in the same LPC with the same owner. In this example, it is other Boots pharmacies in Herefordshire and Worcestershire.

The column outlined in orange shows the average monthly claims for all pharmacies nationally with the same owner.

In this case, the dashboard shows that Boots pharmacies in Herefordshire and Worcestershire, and all Boots pharmacies nationally, claim for more services than FA227. The exceptions to this are Pharmacy First and the Contraception service.

# Page 7 – Pharmacy First fixed payments



This page enables the user to benchmark the proportion of pharmacies receiving either the full or reduced monthly fixed payment for the pharmacy first service.

This accounts for the increasing thresholds since the service launched.

From June 2025, it also accounts for the requirement for a pharmacy to be signed up to deliver the pharmacy contraception service and the hypertension case finding service, as well as meeting the activity threshold, to receive the fixed payment.

Hovering over a column will give further insights on the proportion of pharmacies receiving the full, reduced, or any payment.

The proportions are colour coded. If the value is green, the proportion of pharmacies receiving the payment is at least 10% higher than the national average. If it is red, it is at least 10% lower than the average. If it remains black, it is within 10% of the average.

LPC Hillingdon		
Proportion of participating pharmacies eligible for		
Full £1,000 payment:	Reduced £500 payment:	Any fixed payment:
74.1%	3.4%	77.6%

# Page 8 – Pharmacy First bundling

## Pharmacy First and Bundling - full payments

Filter 1. Month

December 2025

Filter 2. LPC (optional)

All

Clear all slicers

**6,016 (59.9%)**

pharmacies who are signed up to deliver the Pharmacy First service claimed for 30 or more clinical pathway consultations

**Of the pharmacies which provided 30 or more clinical pathway consultations:**

**5,980**

met all requirements for the £1,000 payment

**12**

are signed to deliver the hypertension casefinding service, but not the contraception service

**7**

are signed to deliver the contraception service, but not the hypertension casefinding service

**17**

are not signed up to deliver either bundled service

Switch to pharmacies eligible for a reduced monthly payment

This page shows the impact of bundling on the number of pharmacies receiving the £1,000 monthly fixed payment.

On this page, the first value shows the number and proportion of all pharmacies who are signed up to deliver the Pharmacy First service, who delivered 30 or more clinical pathways consultations.

The left-hand value on the bottom row shows the number of pharmacies who are signed up to deliver the contraception and hypertension case finding services and are therefore eligible for the fixed payment.

The other values show the number of pharmacies who didn't meet one or both of the bundling requirements.

There is a button at the bottom of the page to change the data to reflect pharmacies who delivered between 20 and 29 clinical pathway consultations, potentially making them eligible for a reduced fixed payment of £500.

# Page 9 – Bundling by pharmacy

## Pharmacy First and Bundling - payments by pharmacy

Filter 1. Month: December 2025  
 Filter 2. LPC (optional): Dorset  
 Filter 3. Contractor code (optional): All

Contractor code	Pharmacy name	Payment eligibility	Clinical Pathways consultations	Delivering HCFS	Delivering PCS	ABPM claims
FFE58	FERNDOWN PHARMACY	No payment received	31	No	No	0
FGC36	ROWLANDS PHARMACY	No payment received	15	Yes	Yes	0
FGD26	WELL WEYMOUTH - BUXTON ROAD	No payment received	19	Yes	Yes	3
FGD30	SOMERFORD PHARMACY	No payment received	7	Yes	Yes	0
FGJ07	SANDFORD PHARMACY	No payment received	12	Yes	Yes	2
FGW46	TALBOT PHARMACY	No payment received	0	Yes	Yes	0
FHA62	ALLIED PHARMACY FERNDOWN	No payment received	11	Yes	Yes	0
FHC79	HEALTHPOINT PHARMACY	No payment received	8	Yes	Yes	0
FJ896	BEAR CROSS PHARMACY	No payment received	15	Yes	Yes	0
FJG24	ARROWEDGE PHARMACY	No payment received	0	No	No	0
FJH73	AVICENNA PHARMACY	No payment received	0	No	No	0
FKT39	WRIGHTS PHARMACY	No payment received	25	No	Yes	0
FL016	CREST PHARMACY	No payment received	19	Yes	Yes	0
FL223	THE ABBEY PHARMACY	No payment received	16	Yes	Yes	0
FL781	MOORS PHARMACY	No payment received	18	Yes	Yes	2
FM216	LLOYDSPHARMACY	No payment received	0	Yes	Yes	0
FM887	IN STORE PHARMACY	No payment received	19	Yes	Yes	1
FN020	LAYANSON PHARMACY- WEYMOUTH	No payment received	15	Yes	Yes	2
FN247	SUPERDRUG PHARMACY	No payment received	15	Yes	Yes	1
FN499	LYTCHETT PHARMACY	No payment received	10	Yes	Yes	3
FPN51	WEYMOUTH PHARMACY	No payment received	5	Yes	Yes	0
FPT55	MORRISONS PHARMACY	No payment received	13	Yes	Yes	0
FQ123	WELL	No payment received	13	Yes	Yes	5
FQ306	C & M CHEMISTS	No payment received	12	Yes	Yes	0
FQQ97	ROWLANDS PHARMACY	No payment received	0	Yes	Yes	0
FR043	TUCKTON PHARMACY	No payment received	14	Yes	Yes	0
FRD44	AUTOMEDS PHARMACY LTD	No payment received	0	Yes	Yes	0
FRP28	MARNHULL PHARMACY	No payment received	14	No	No	0
FT722	VANTAGE PHARMACY	No payment received	11	Yes	Yes	0

This page shows each pharmacy and their monthly fixed payment eligibility.

The “Payment eligibility” column shows the payment which the pharmacy is eligible for.

The “Clinical pathways consultations” column shows the number of claims in the specified month. If the number of claims is 30 or more, it will turn green. If it is between 20 and 29, it will turn yellow. If it is below 20, it will turn red.

The next two columns on show whether the pharmacy is signed up to deliver the hypertension case finding service (HCFS) and the contraception service (PCS). The background will turn green if they are signed up, and red if they aren't.

In this example, the dashboard shows that FFE58 claimed for 31 clinical pathways consultations, meaning they have exceeded the activity threshold. However, as they are not signed up to deliver the HCFS or PCS, they did not receive a monthly fixed payment.

The number of ambulatory blood pressure monitoring claims has also been included, but has no impact on the payment eligibility currently due to the delayed requirement.

# Page 10 – Lookup information about a pharmacy

## Lookup information about a pharmacy

Filter 1. Contractor code  
All

Filter 2. Pharmacy name  
Enter pharmacy name

Filter 3. Postcode  
Enter postcode

Filter 4. LPC  
All

Filter 5. ICB  
All

Apply all filters

Clear all filters

Contractor code	Pharmacy name	Address Line 1	Postcode
FA002	ROWLANDS PHARMACY	61 ARUNDEL AVENUE	SK7 5LD
FA007	ROWLANDS PHARMACY	UNIT 10A-10B	CM9 4GD
FA008	BOOTS	49-51 MERRION CENTRE	LS2 8PJ
FA012	MEDICHEM	100 WHITE HORSE LANE	E1 4LR
FA015	HEADCORN PHARMACY	GRIGG LANE	TN27 9AA
FA019	GALEXA PHARMACY	61 ANNESLEY ROAD	NG15 7DR
FA026	GRENDON PHARMACY	150 BOOT HILL	CV9 2EW
FA029	ROWLANDS PHARMACY	294 LONDON ROAD	PO2 9JN
FA031	BRIDGEGATE CHEMIST	54 BRIDGEGATE	DN22 7UZ
FA037	NEWLINE PHARMACY	DEREHAM TERRACE	NE62 5UR
FA040	NITON PHARMACY	HIGH STREET	PO38 2AZ
FA041	WELL	5 PALACE AVENUE	TQ3 3EF
FA042	LLOYDSPHARMACY	20 GREAT WHYTE	PE26 1HA
FA044	COASTAL PHARMACY	1 HEYSHAM ROAD	LA3 1DA
FA049	FA STRANGE CHEMIST	185 LOWER CLAPTON ROAD	E5 8EQ
FA052	INSTORE PHARMACY	BRIDGE ROAD	RM13 9YZ
FA053	BOOTS	73 PICCADILLY	W1J 8HS
FA056	LLOYDSPHARMACY	WILLIAM FROST WAY	NR5 0JS
FA057	HESWALL HILLS PHARMACY	119 BRIMSTAGE ROAD	CH60 1XF
FA058	WM MORRISON SUPERMARKETS PLC	FESTIVAL WAY	ST1 5NY
FA064	COHENS CHEMIST	2 KNOWSLEY PLACE	BL9 0SN
FA065	WELL WOODFORD - JUBILEE PARADE	2 JUBILEE PARADE	IG8 7QF
FA066	SINGLEWELL PHARMACY	133 SINGLEWELL ROAD	DA11 7QA
FA074	VICTORIA PARK PHARMACY	VICTORIA PARK MEDICAL CENTRE	TA6 7AS

This page allows users to search for information about a pharmacy.

Users can enter known information such as the contractor code, pharmacy name, postcode, LPC or ICB.

Once the user has pressed the “apply all filters button”, the dashboard will display the contractor code, pharmacy name, address line 1 and postcodes of the pharmacies meeting those criteria.

# General

Clear all filters

- This button clears the filters on the page and returns to the default page setting.

Filters

Search

Filters on this page

Contract type is (All)

Filter type

Basic filtering

Search

Select all

Bricks and Mort... 20549

Distance Selling P... 383

- Filters can be accessed from the right hand-side of the dashboard.
- On all pages, there is a filter which allows the user to switch between all pharmacies, DSP only and Bricks & Mortar only.
- Default setting is data for all types of pharmacies.

Filter 2. Contractor Code

Multiple selections

Search

FA002

FA012

FA015

FA019

FA026

FA031

- To select multiple options from a dropdown filter, hold CTRL on your keyboard and select the options you wish to choose.
- To search for an option from a dropdown menu, select the dropdown menu. Then press CTRL + F simultaneously and it will allow you to search. To note: this currently only works on the longer menus, such as Contractor Codes.

Pharmacy Codes (or F-Codes) can be found using the NHS England Organisational Data Service Data Search and Export tool, available [here](#).

# Contact us

For further support, please contact Sam Chidlow via  
[CCA.dashboard@thecca.org.uk](mailto:CCA.dashboard@thecca.org.uk)



[www.thecca.org.uk/local-representatives/local-data-dashboard/](http://www.thecca.org.uk/local-representatives/local-data-dashboard/)



[CCA.dashboard@thecca.org.uk](mailto:CCA.dashboard@thecca.org.uk)